

# Heinz Memorial Park



Larch 414 Sp21  
Filip Malysz  
Department of Landscape Architecture  
Pennsylvania State University



# History and Context



## Intro

Heinz Memorial park is situated in a quite Pittsburgh suburb on the shores of the Alleghany river. Originally the site of a glass manufacturing plant, this community space is the focus of a re-design and revitalization effort spearheaded by young designers as well as local stakeholders. The existing park space is divided into several sport arenas, a playground, ticket booth and some undeveloped land. Through careful collaboration with the local community, this park space has been given a new purpose and vision. By servicing the local residents and implementing thoughtful design choices this park will truly be a valuable community space!

## Heinz Memorial Park and Rail Spur



## Existing Conditions





## Park Plan

### Welcome to the Heinz Memorial park! Explore the park map below!

During the early design process it became apparent that planting design, circulation and landforms all played a critical role in framing the environment around this public space. The goal is to create one cohesive park design with numerous smaller spatial experiences hidden throughout. You will notice these as you wander throughout the park. Focus on the ideas of open, closed, distant and intimate. Where do you find these feelings and what evokes them?







### ① **The Gateway**

The grand opening! This portal takes you from the tight Sharpsburg streetscape into a welcoming plaza filled with life and excitement!

### ② **Welcome Plaza**

The perfect place to rest, mingle, catch-up and splash around! The water feature is designed for safe child play and is a focal point of interaction and cohesion within Heinz Memorial park. It also serves as a meeting point and primary gateway to introduce the rest of the park.

### ③ **Outdoor Picnic**

Adjacent to the public restrooms there is a lawn space perfect for snacks and having a picnic with friends and family.





#### 4 **Children's Plaza**

This space serves to give children a safe place to interact with nature and with one another. A colorful plaza with seating mounds welcomes children and parents to be part of exploring outdoors! A playground as well as open lawn area are the main spatial components designed for children's play.

#### 5 **Children's Garden**

This pathway loop allows children to take the adventure into their own hands by meandering down the trail and learning about all the wonderful plant and trees that they see.

#### 6 **The Rail Spur Trail**

This trail runs parallel to Heinz Memorial Park, the gravel pathway takes one along an old rail line, now out of commission. The route serves as a lovely nature walk that takes one out of the bustle of the park and into the tranquility of a semi forested trail.





**7 The Baseball Field**  
Little league games and free play are welcome!



**8 Second Gateway**  
Here is an opening to the street, as well as a secondary access route to enter Heinz Memorial Park. Seasonal food trucks and vendors are welcome to use this space during sports games and other community events.





### 9 Pavilion and Basketball Court

A place for all ages, this plaza features a basketball court and a shaded pavilion to facilitate large gatherings. The municipal building is visible on sight on the right hand side.

### 10 Teen Plaza

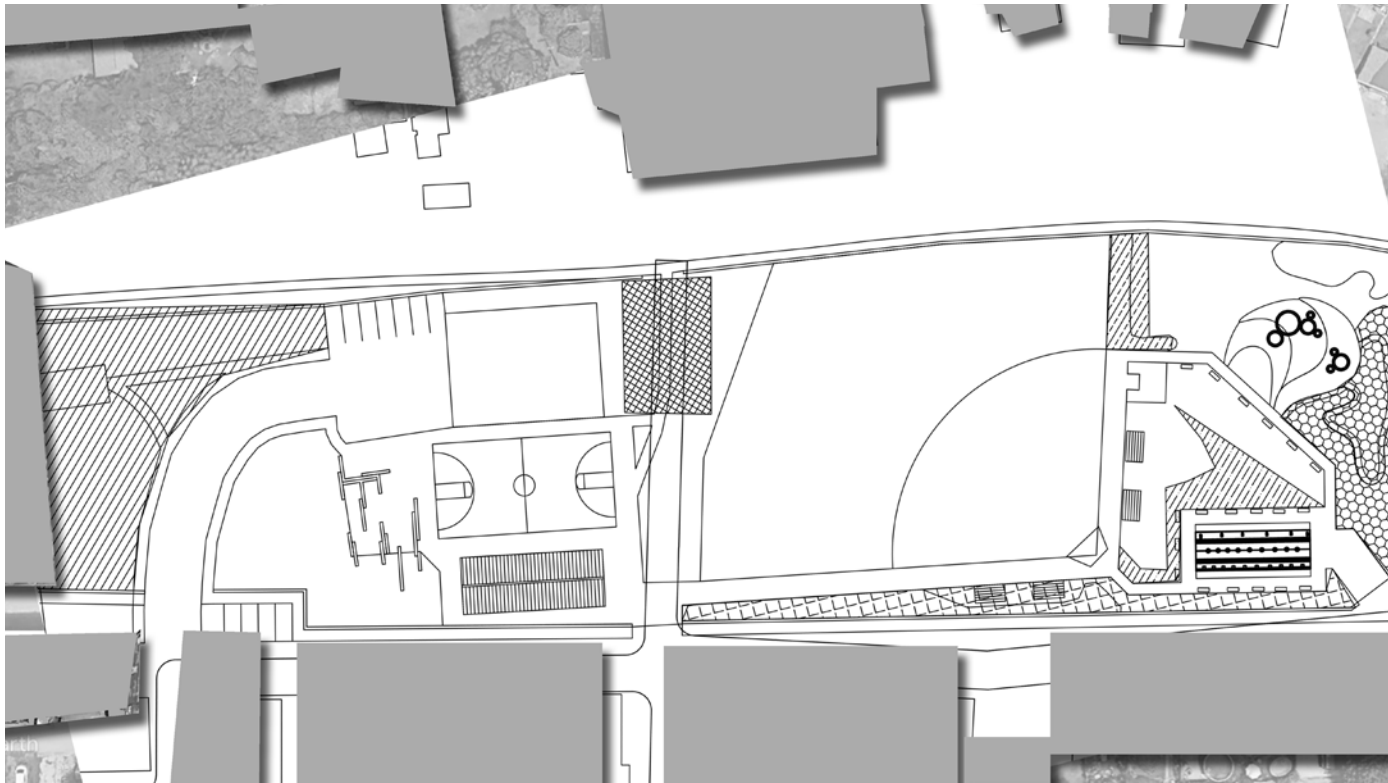
A space for social gathering and interaction, or maybe just a nice spot to sit down.

### 11 Tree plaza

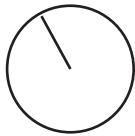
Nested away under tall trees is a small space for solace and contemplation. Being far removed from the rest of the park this seating area offers a uniquely quiet and comfortable nature experience.





# PLANTING PLAN



Pattern Legend

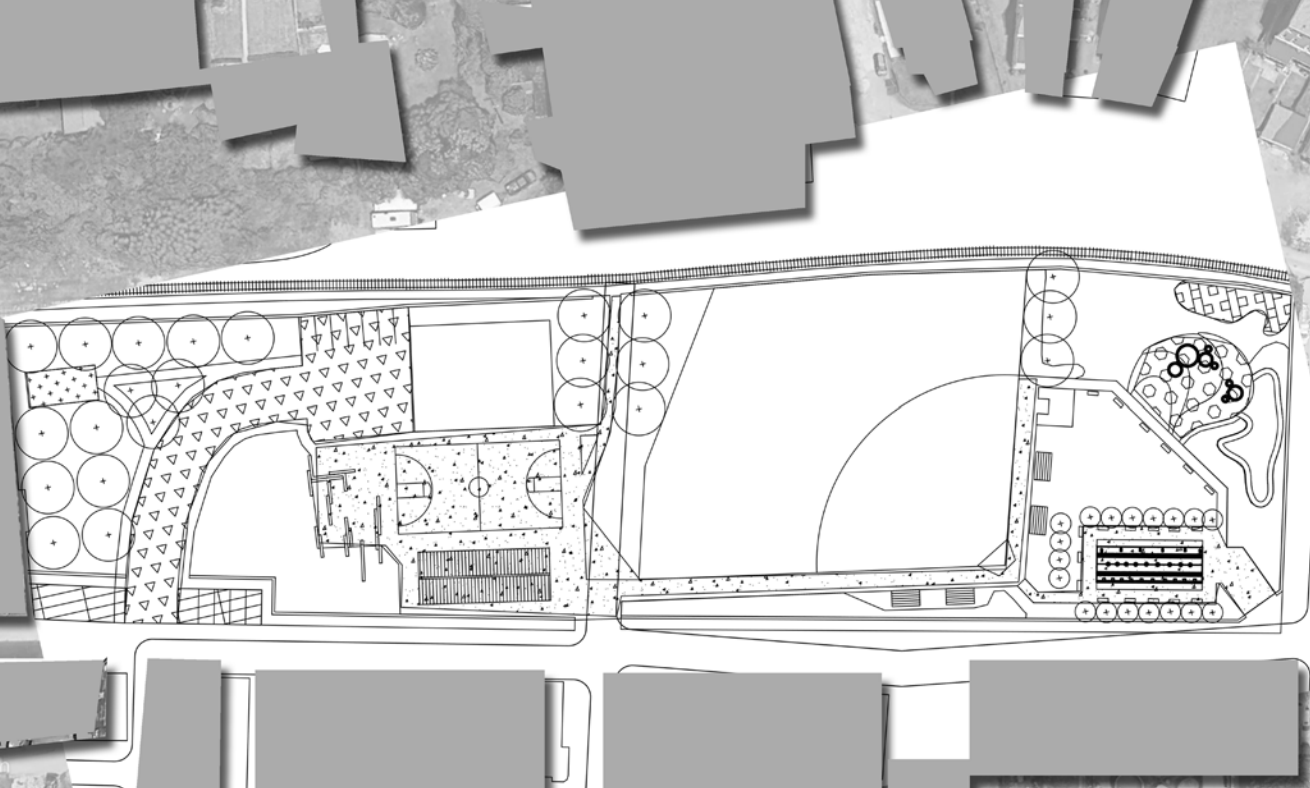


# PLANTING SCHEDULE




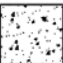
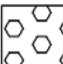

Common Name	Scientific Name	Planting Area
<i>Acer rubrum</i>	Red Maple	
<i>Astilbe</i>	Appalacian False Goats Beard	 
<i>Betula alleghaniensis</i>	Yellow Birch	 
<i>Calendula officinalis</i>	English Marigold	
<i>Carpinus caroliniana</i>	American Red Bud	 
<i>Fagus grandifolia</i>	American Beach	 
<i>Fagus sylvatica 'Purpurea'</i>	Copper Beach	
<i>Festuca glauca</i>	Blue Fescus	
<i>Hakonechloa</i>	Hakone Grass	
<i>Hesperaloe parviflora</i>	False Yucca	 
<i>Lavandula stoechas</i>	French Lavender	
<i>Ligustrum</i>	Privet	
<i>Miscanthus sinensis</i>	Chinese Silver Grass	
<i>Nassella tenuissima</i>	Mexican Feather Grass	
<i>Osteospermum</i>	African Daisy	 
<i>Quercus alba</i>	White Oak	
<i>Viburnum xrhytidophylloides</i>	Alleghany Viburnum	



# MATERIALS PLAN



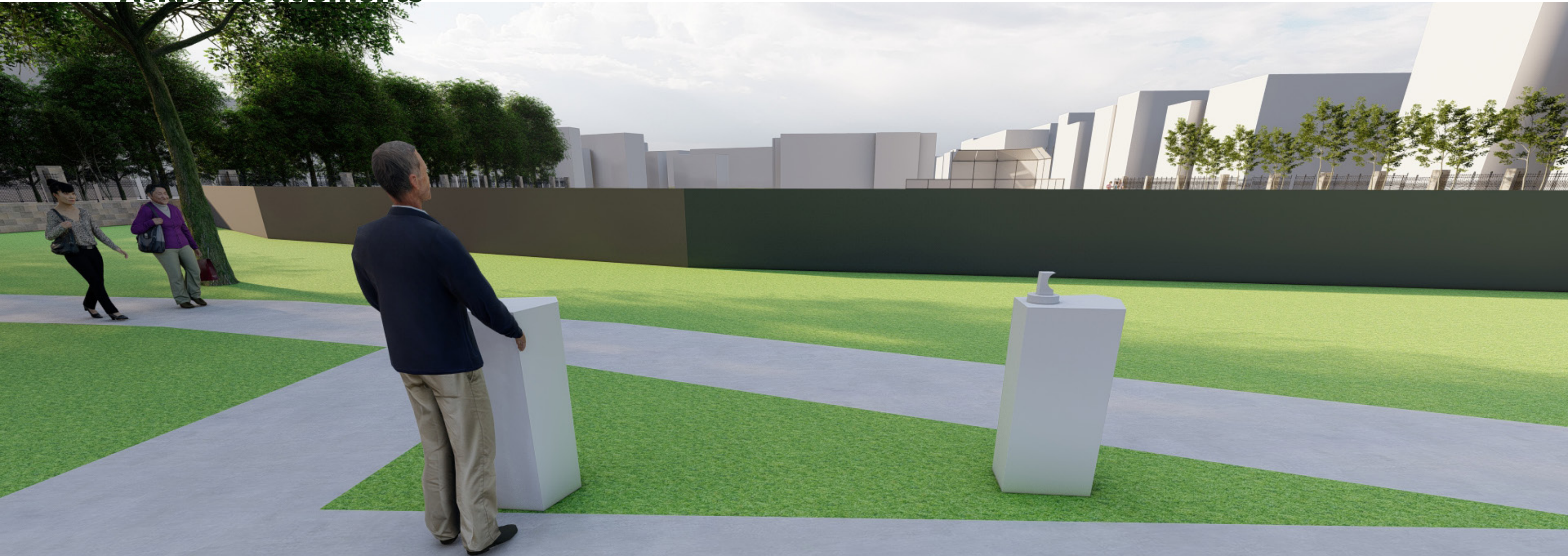
## Pattern Legend

-  Permeable Paving
-  Brick Paving
-  Asphalt
-  Concrete
-  Plaza Paving
-  Synthetic Ground





# Acknowledgements



*Thank you to the following:*

Triboro Eco District  
Pennsylvania State University  
Kenneth Tamminga- Landscape architecture professor  
David Himes- Collaborator, consultant, landscape architect  
Brittany Reno- Sharpsburg city councilwoman  
Pamela Lien- Landscape architecture student