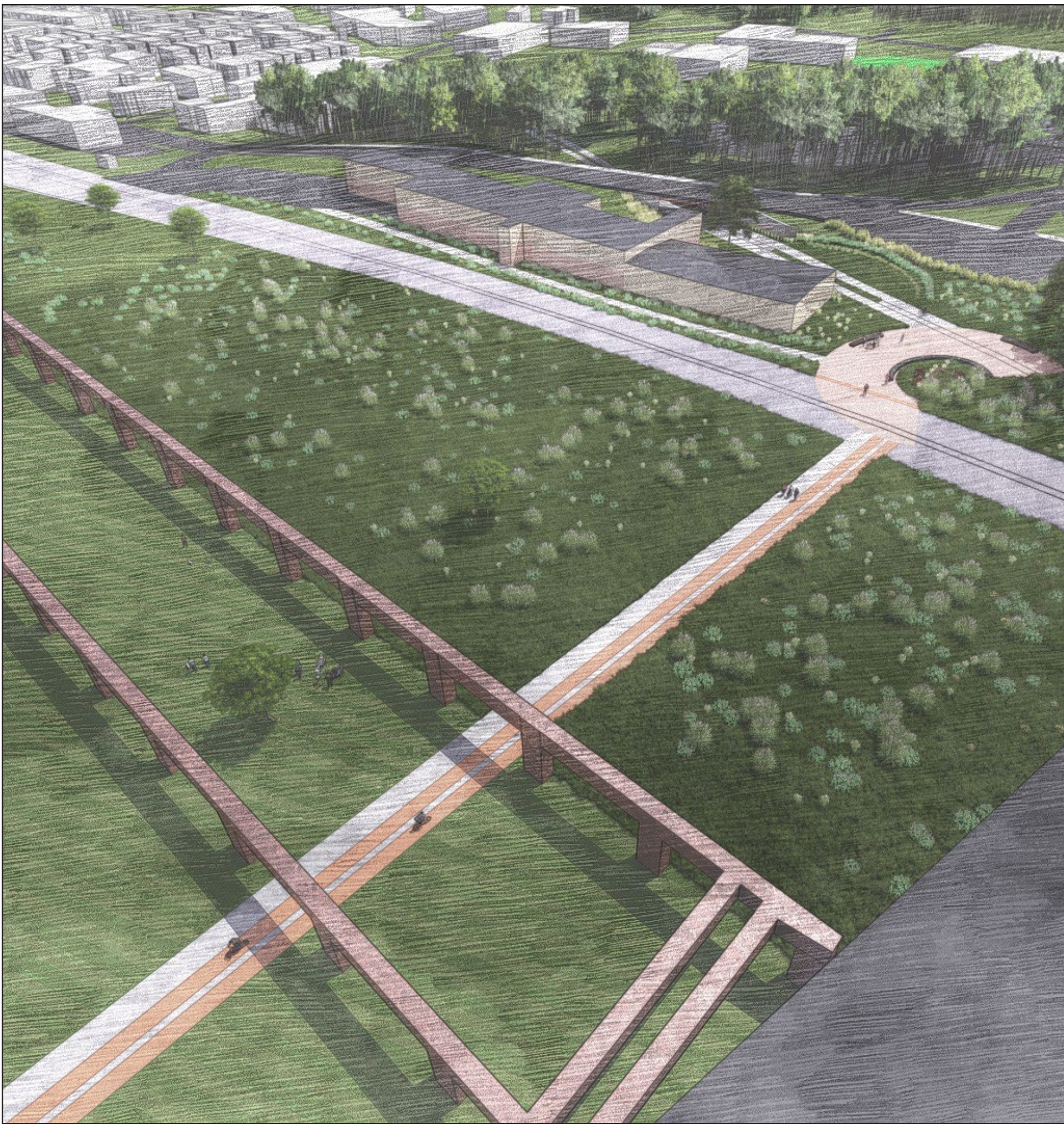


# Sharpsburg Rail Trail

Elliott Kline

Sharpsburg Rail Trail and The Community Portal are projects that capture the historical and cultural essence of Etna and Sharpsburg. The designs contribute to each community’s goals and aspirations for future development. These goals include improving safety and connectivity, minimize flooding impacts, encourage the installation of art, and support the vibrant identity and culture of the river towns.



Trail Hub



Connection to the River



# Connecting Sharpsburg to the Allegheny



Procession to the Water



Indigenous Presence



Wayfinding with Materials



A Safe Place to Walk

The Allegheny River impacts the Sharpsburg community in numerous ways. From providing scenic pleasure, recreation, and economic gain, to its destructive and immense power, the community's relationship with the river will always exist.

In this century, new development is necessary to establish close relationship communities and their local rivers. With the decrease in industrial development and an increase in environmental advocacy, river towns like Sharpsburg can once again connect with the river.

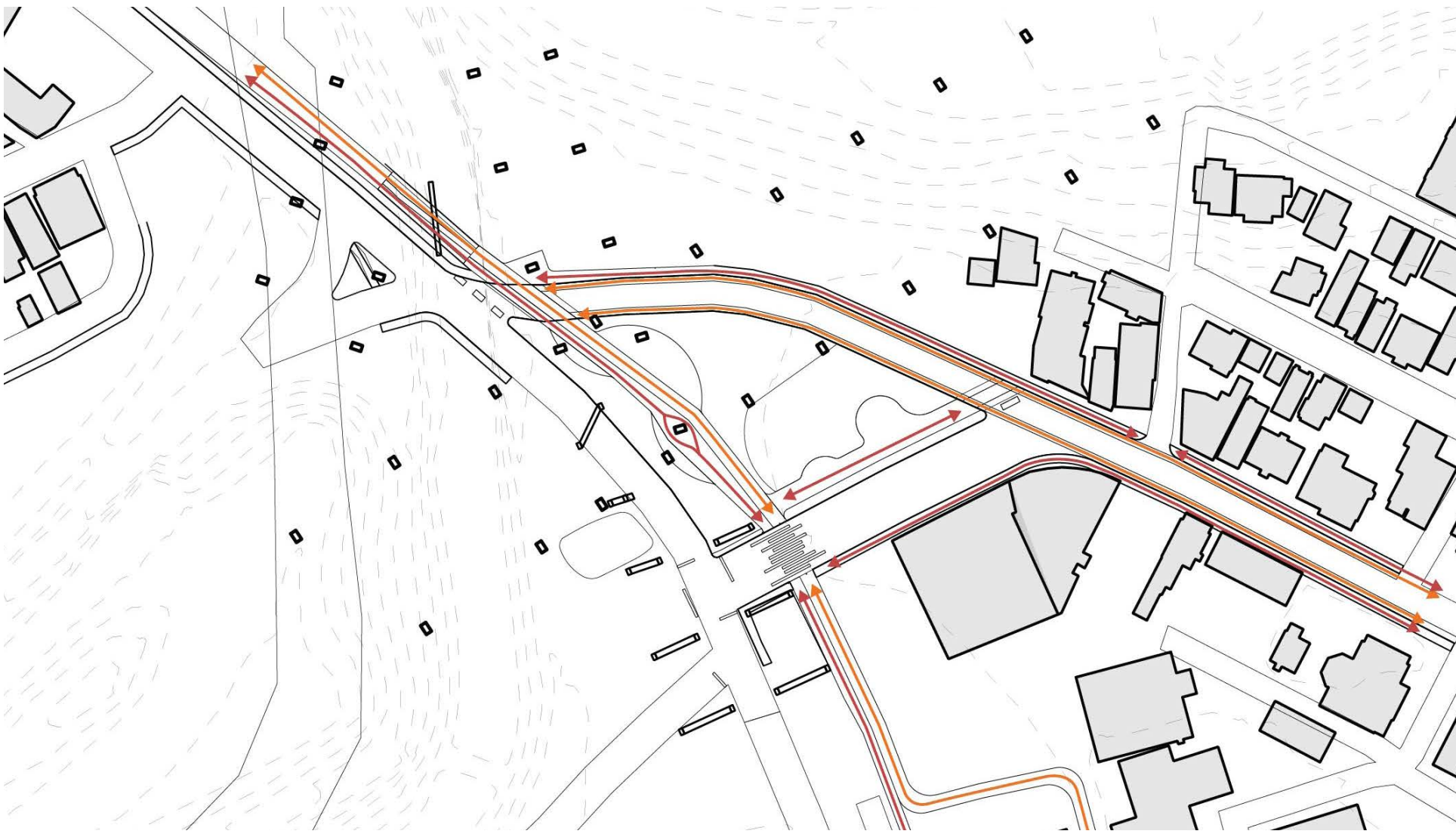


# The Community Portal

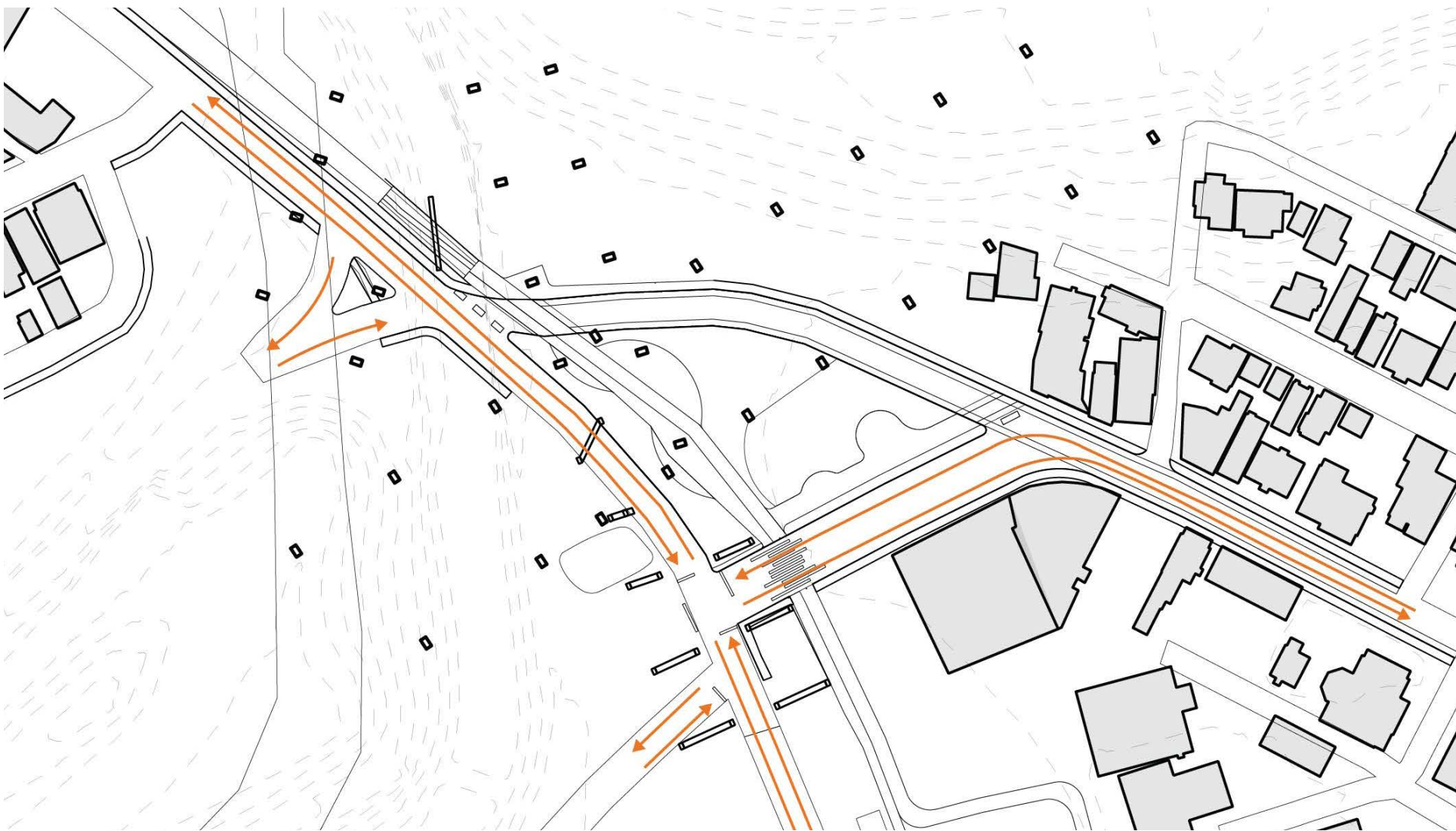
Elliott Kline

## Goals and Accomplishments:

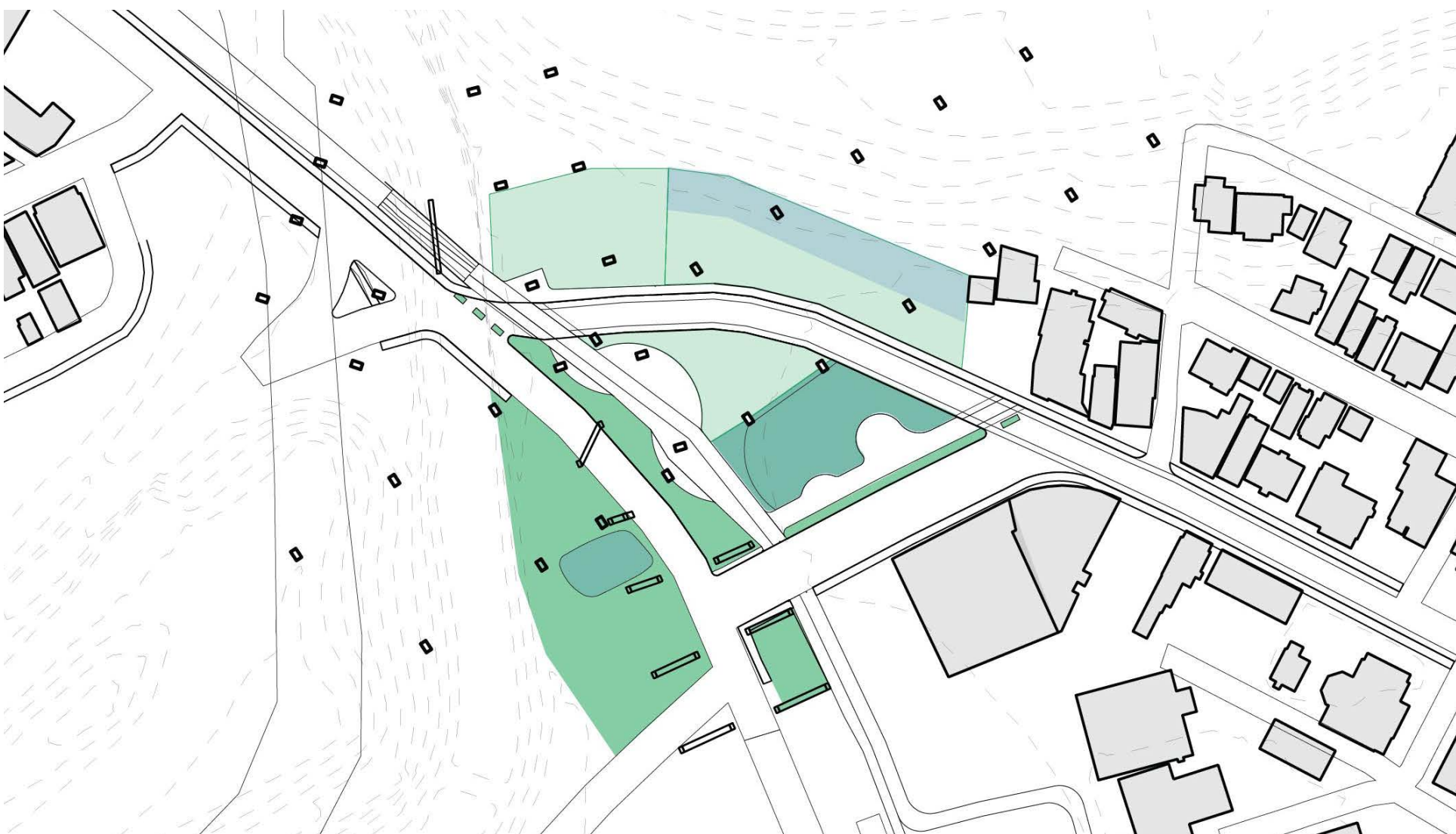
- Easy and safe access between Sharpsburg, Etna, and the River Trail.
- Incorporate historical and cultural art.
- Improve stormwater management.



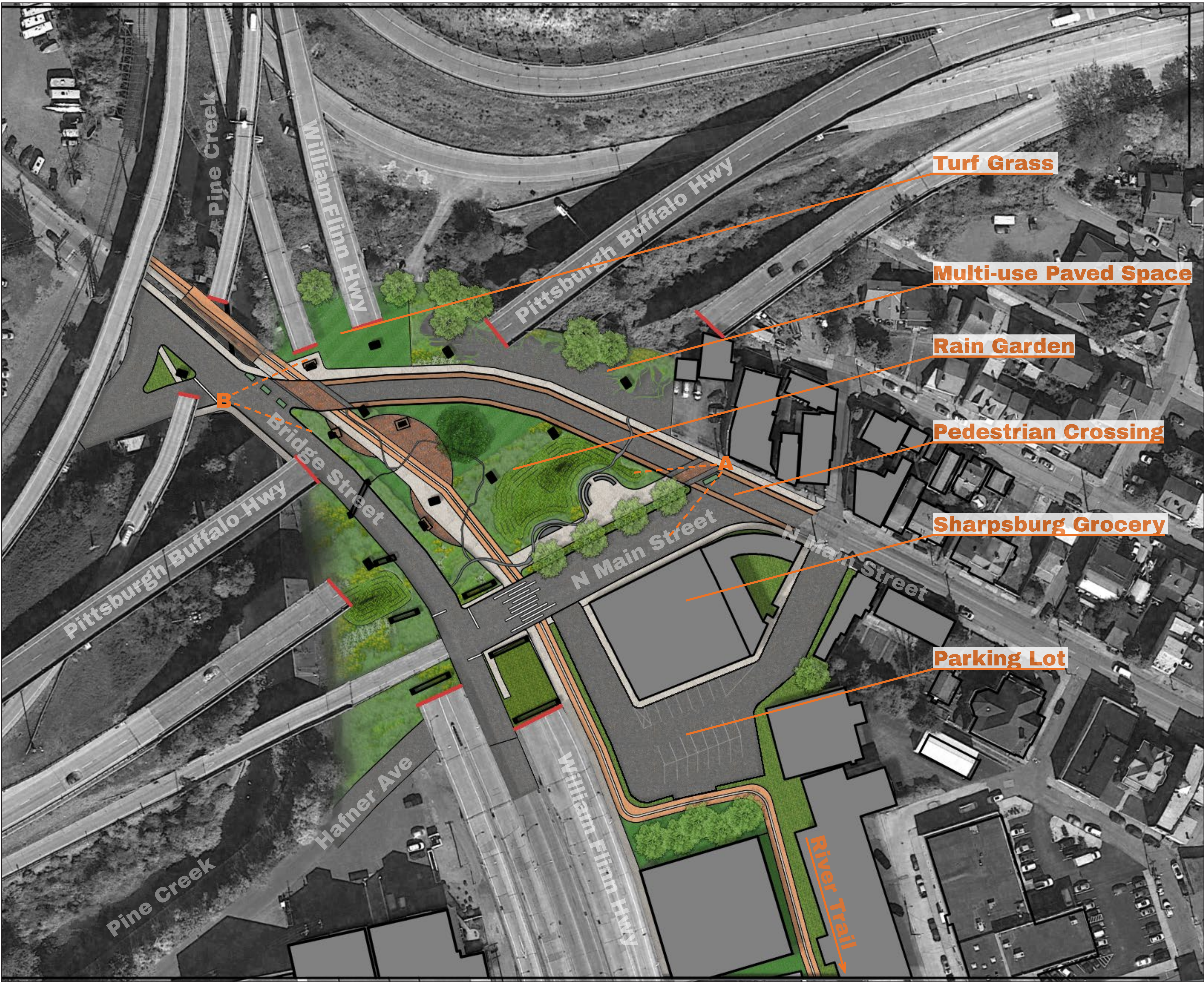
Pedestrian and Bike Circulation



Vehicle Circulation

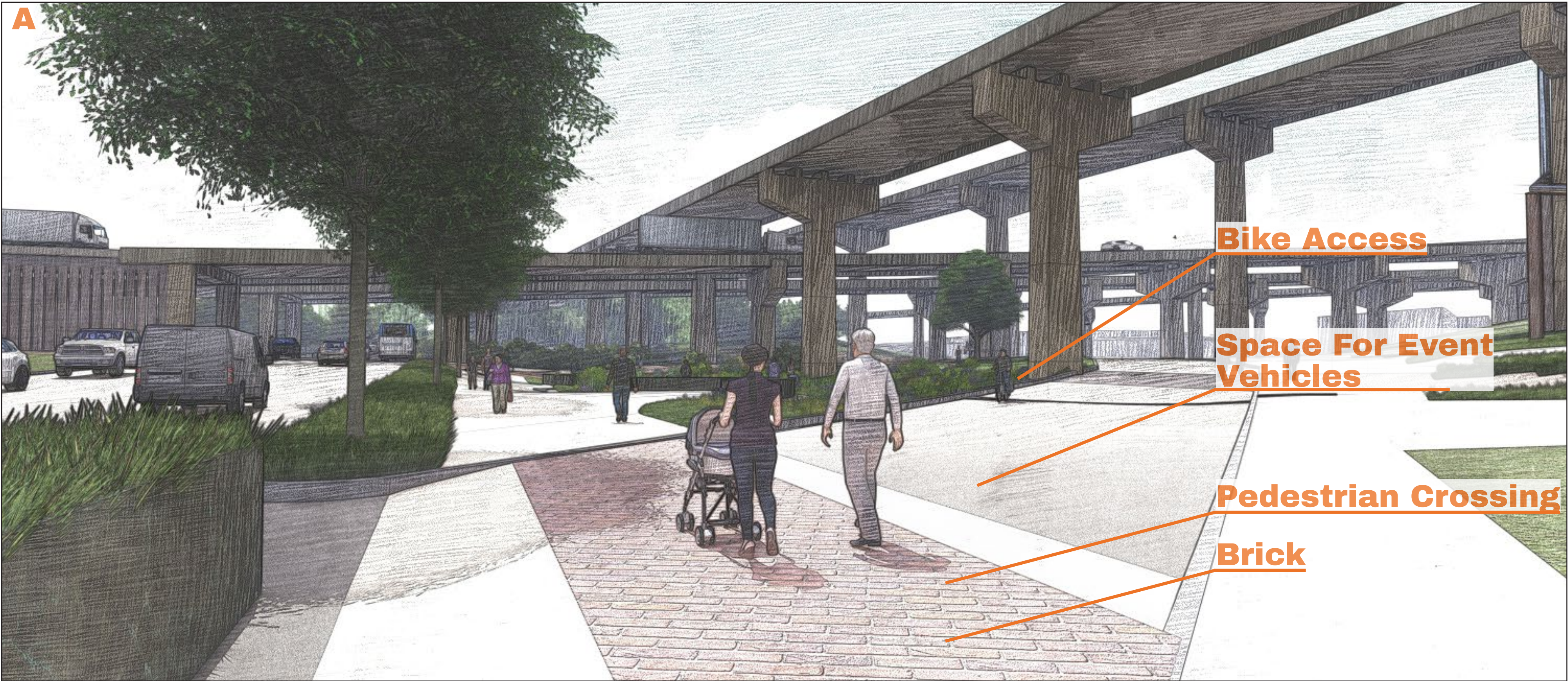


Vegetation and Stormwater





# Closing N Main Street



Increasing Pedestrian Presence



Wayfinding



N Main Street AADT Counts

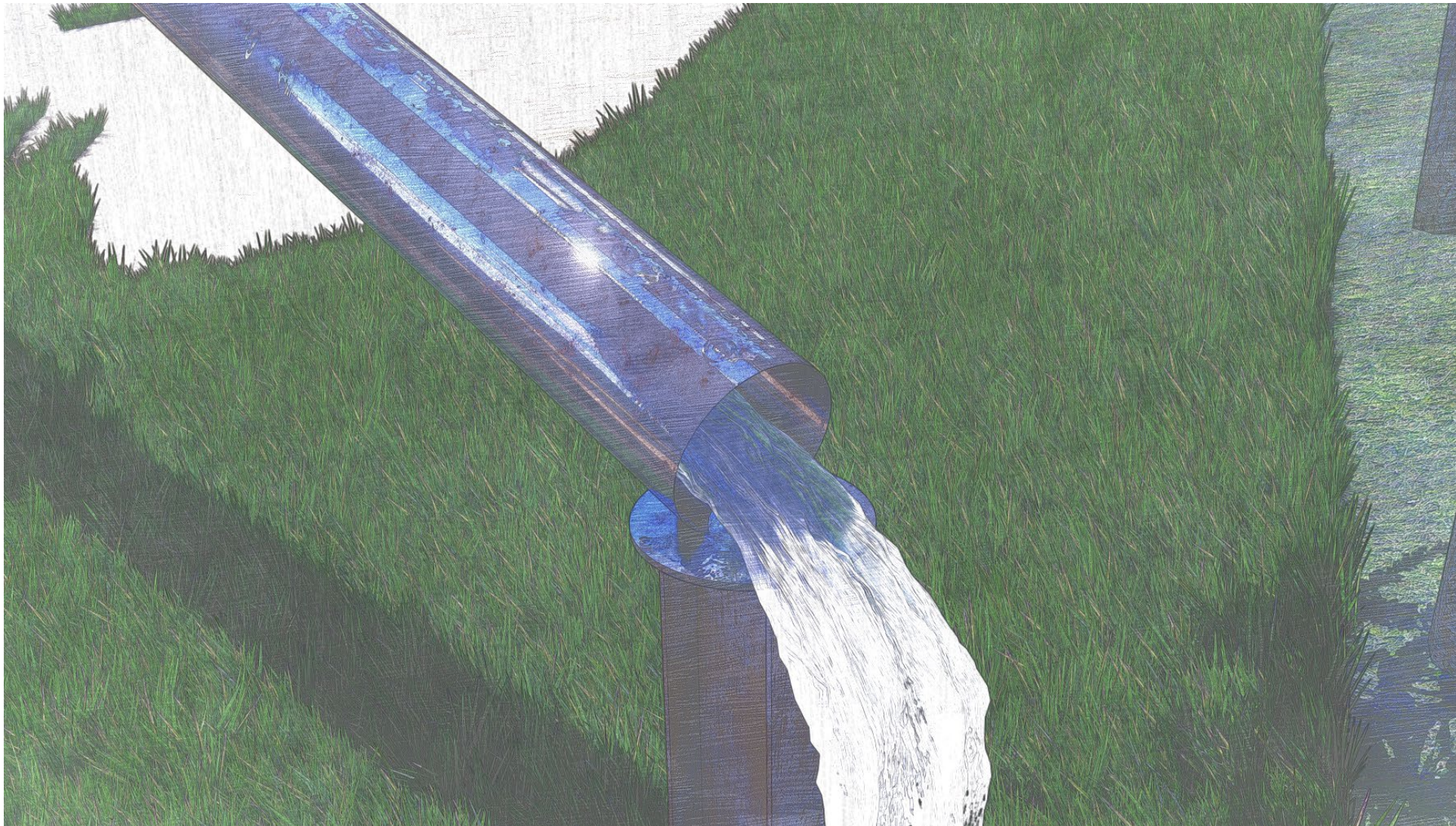
N Main Street (One way)	-----3,677	
N Main Street	-----6,290	
Bridge Street	----- 3,330	
Pittsburgh Buffalo Hwy	----- 62,170	
William Flinn Hwy	-----33,161	
Alexander H. Lindsay Memorial Hwy.	-----6,723	

“Annual Average Daily Traffic (AADT). AADT is the typical daily traffic on a road segment for all the days in a week over a one-year period.” – PennDOT

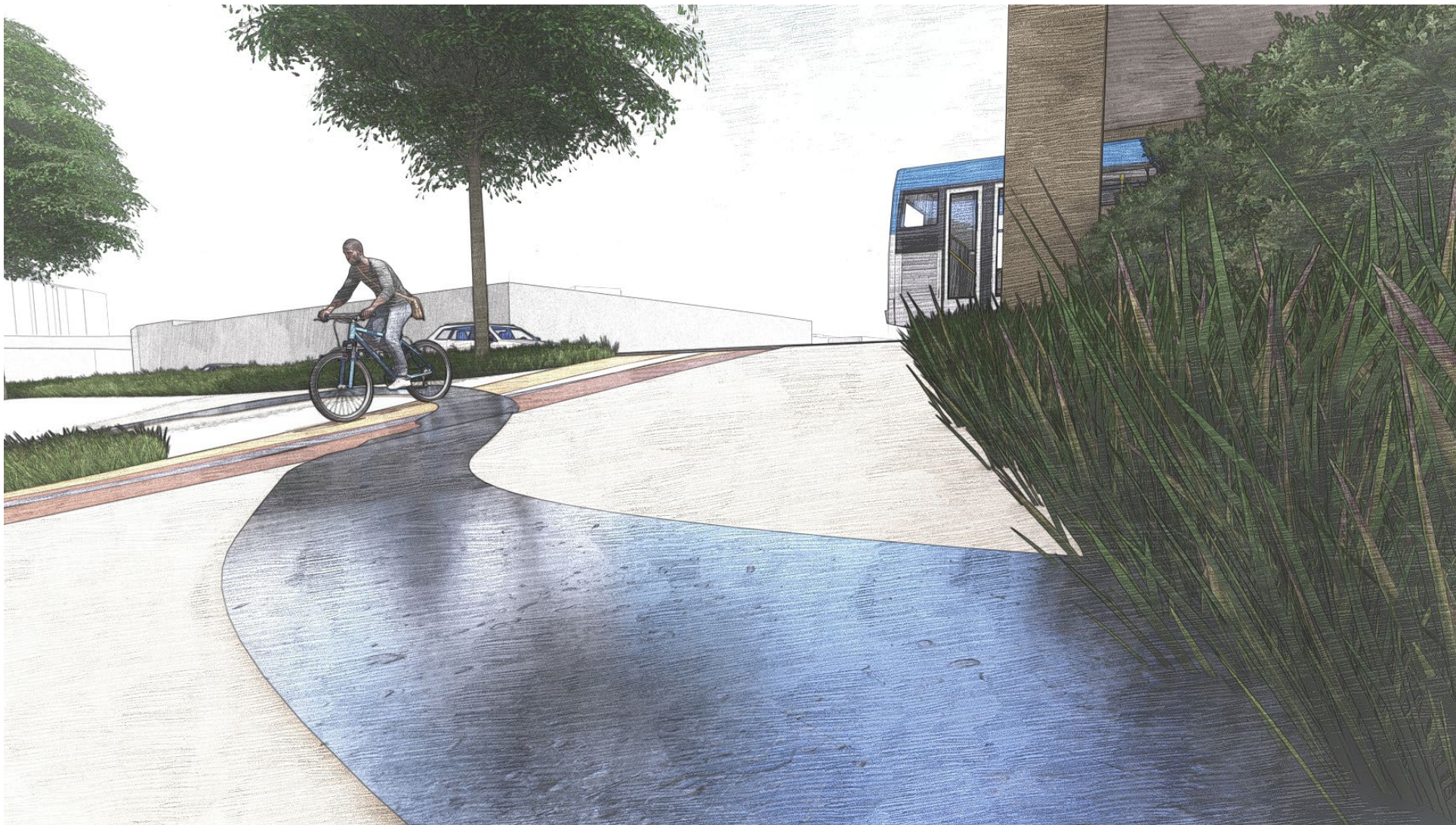
<https://www.arcgis.com/apps/webappviewer/index.html?id=32c041c6b12d4f54a454152ca37356c6>



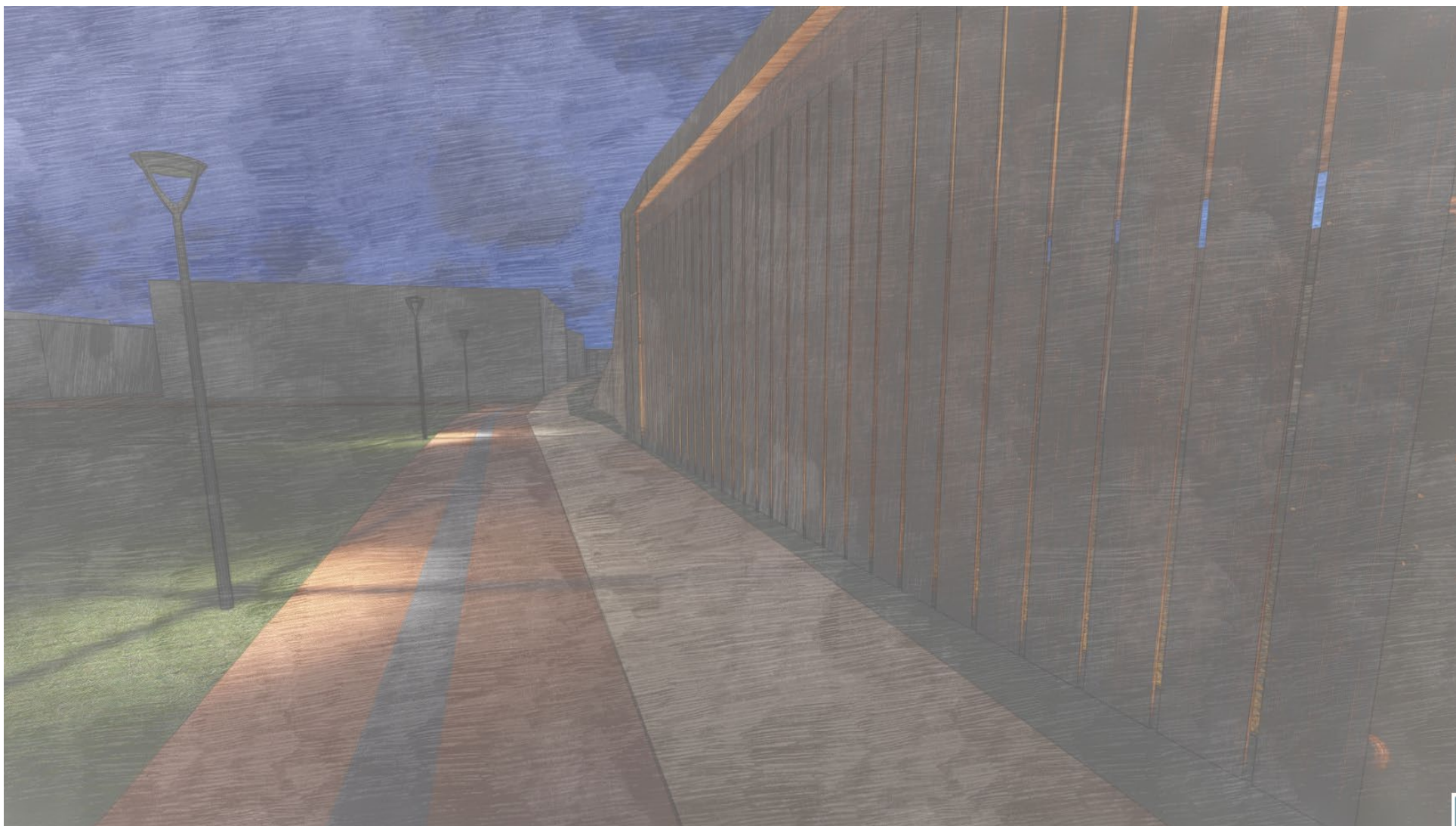
# Identity Through Art



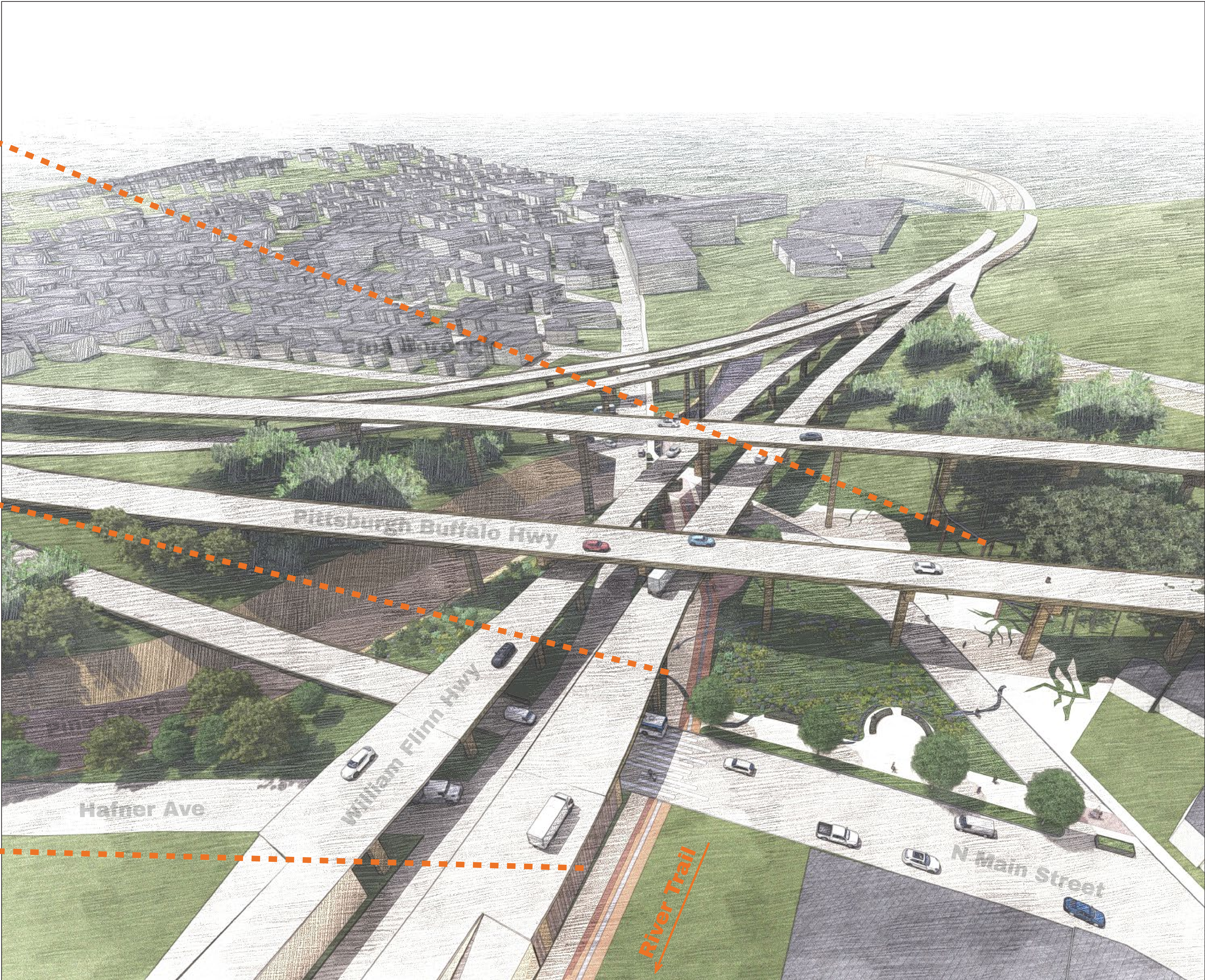
Dedication to Stormwater Management



Allegheny River Town

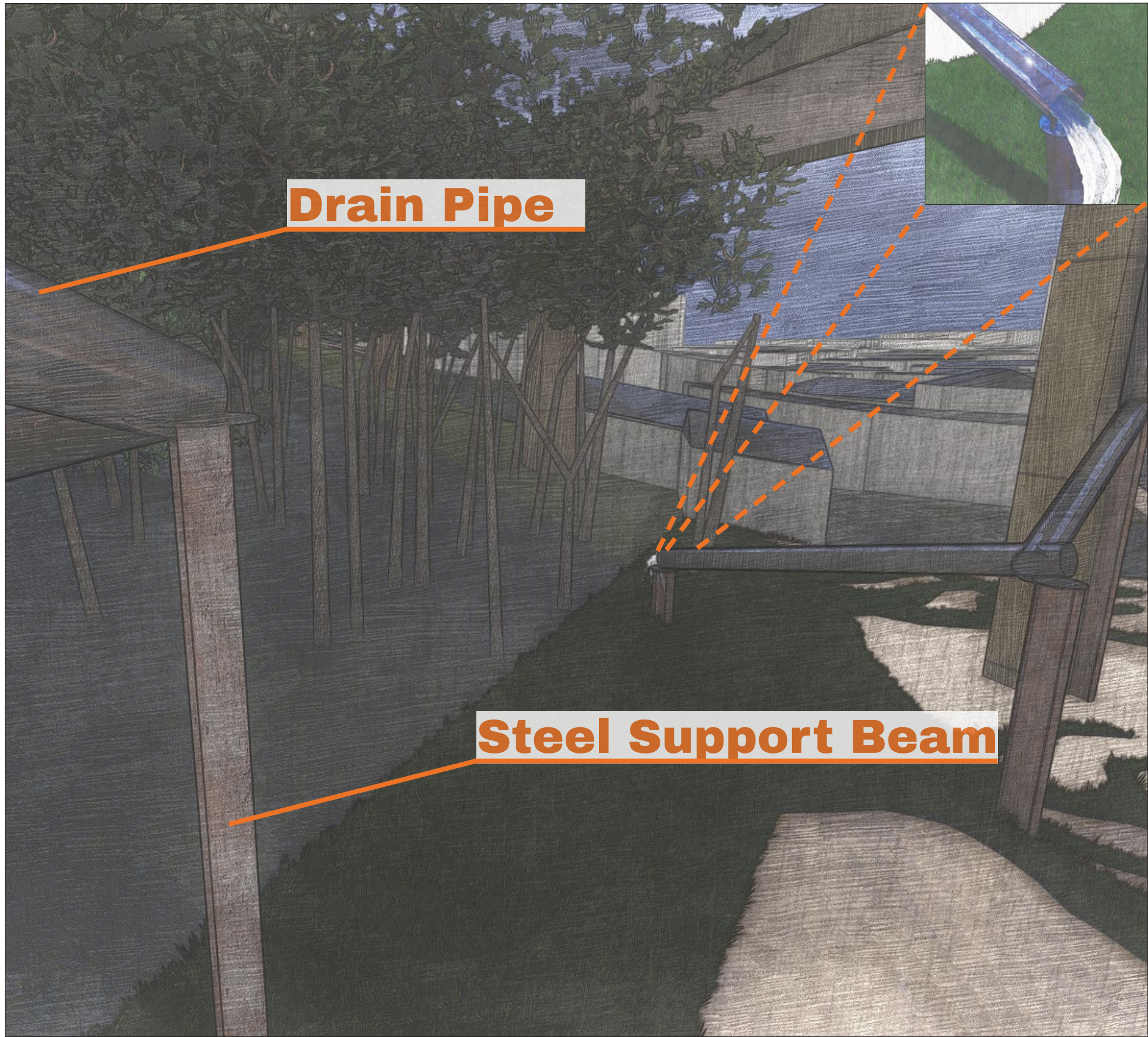


Historical Wooden Bridge

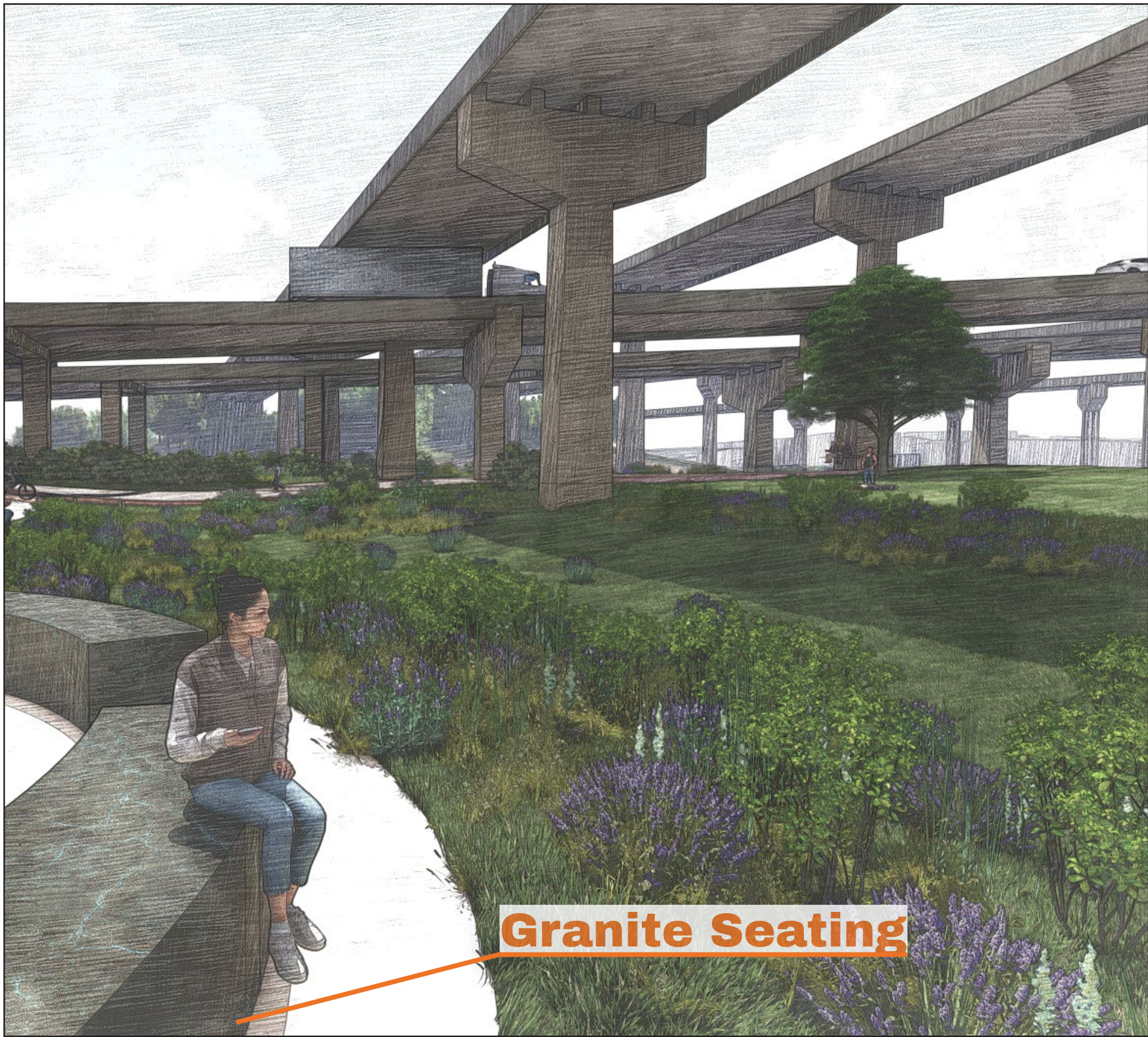




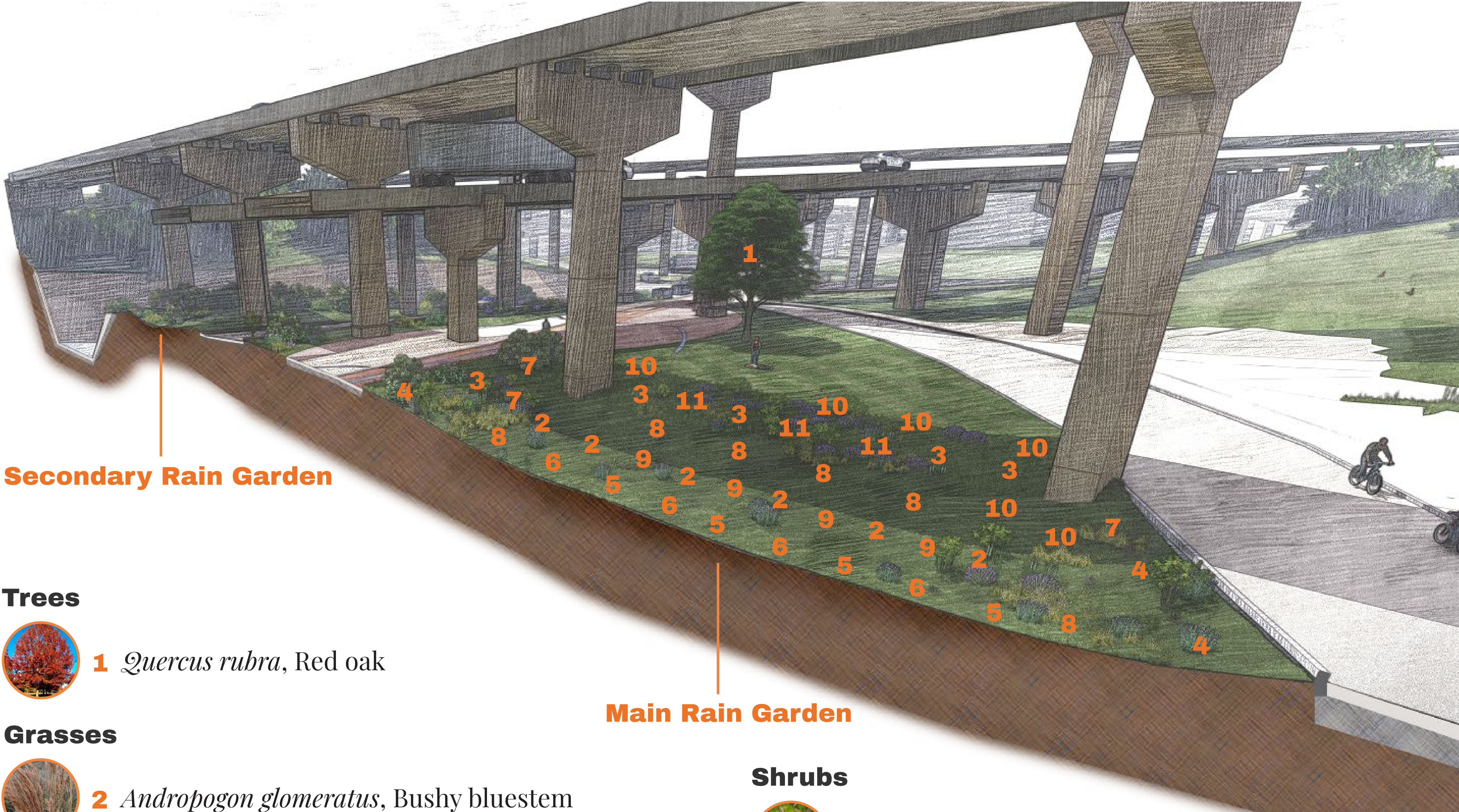
# Mitigating Pine Creek Pollution



Aesthetic Drainage





Main Rain Garden






## Trees

-  1 *Quercus rubra*, Red oak

## Grasses

-  2 *Andropogon glomeratus*, Bushy bluestem
-  3 *Elymus virginicus*, Virginia wild rye

## Forbs

-  4 *Echinacea purpurea*, Purple coneflower
-  5 *Symphyotrichum novae-angliae*, New england aster
-  6 *Vernonia noveboracensis*, New york ironweed

## Shrubs

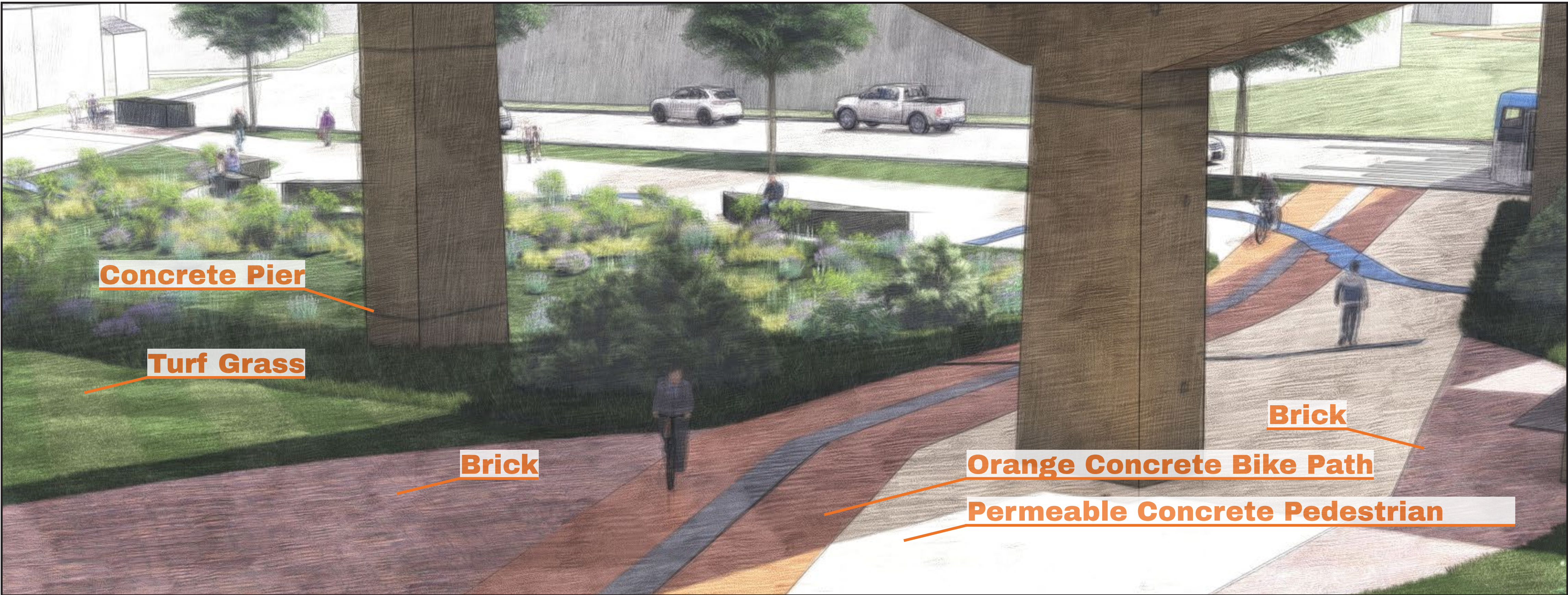
-  7 *Amelanchier arborea*, Serviceberry
-  8 *Aronia arbutifolia*, Chokeberry
-  9 *Kalmia latifolia*, Mountain laurel
-  10 *Lindera benzoin*, Spice bush
-  11 *Vaccinium corymbosum*, Highbush blueberry



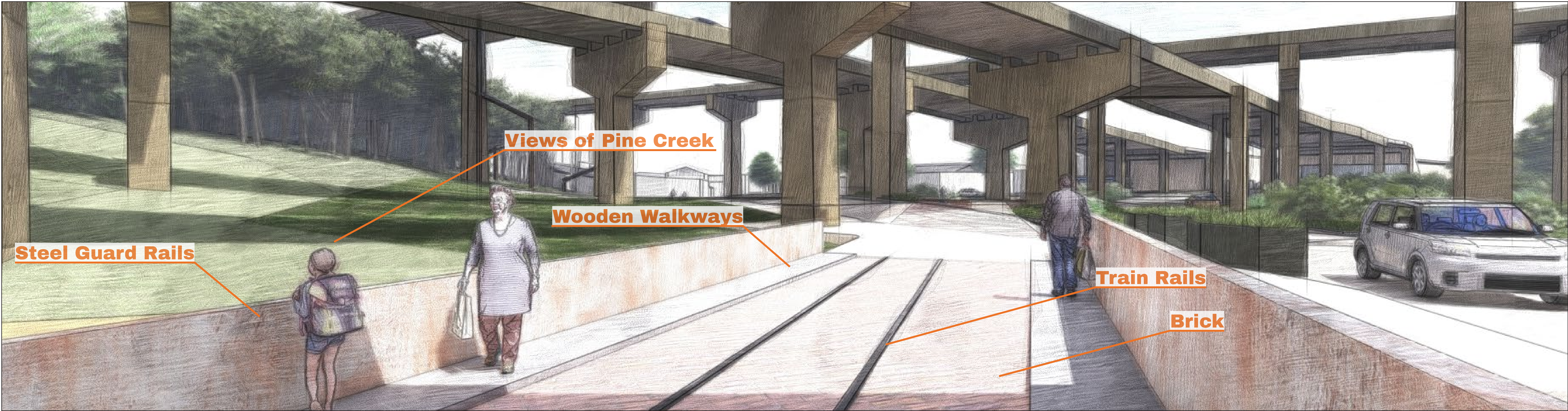
# Biking Path

## Wayfinding with Materials

The design uses materials to help residents find their way from the boroughs of Etna and Sharpsburg to the River Trail. Some of the materials used are orange paint for the bike path, brick pavers, and railroad lines. Although the materials add an aesthetic element to the design, they also invoke the region's history and culture.



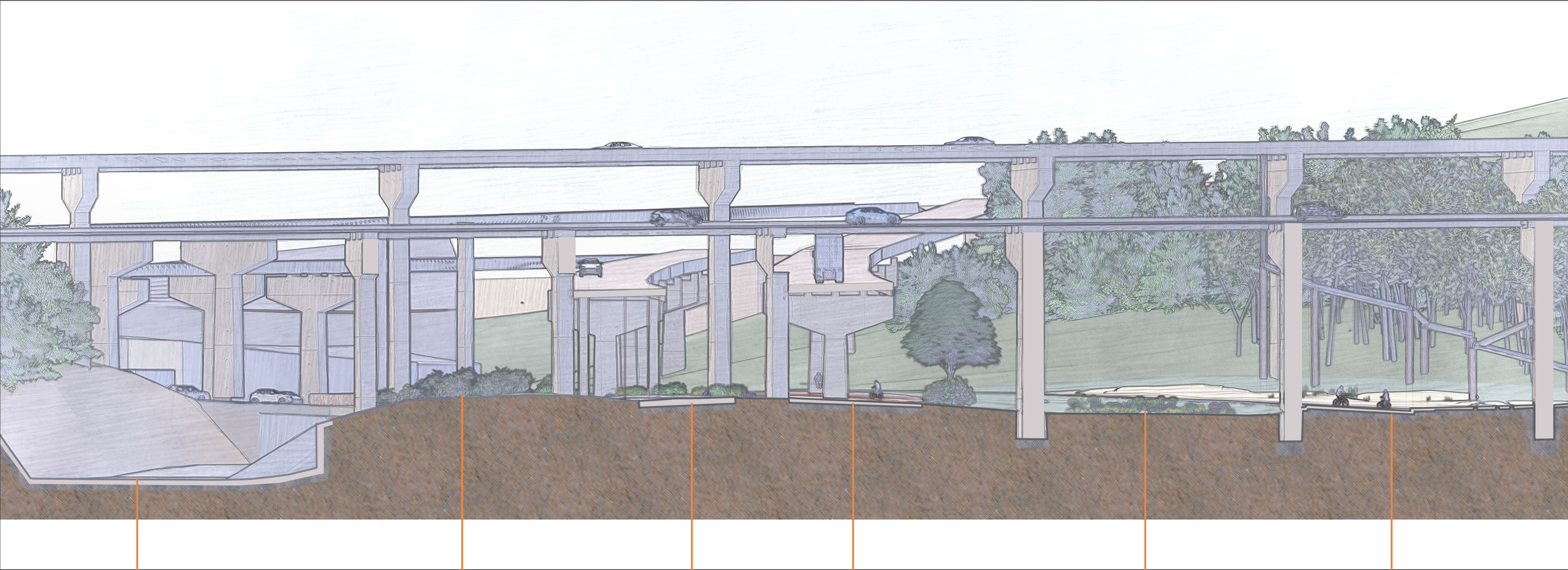
Under the Flyovers



Pedestrianizing the Railroad Bridge



# Under the Flyovers



**Pine Creek**

**Vegetation to Prevent  
Erosion**

**Bridge St**

**Pedestrian/ Bike Path**

**Shade Tolerant Vegetation**

**N Main Street**